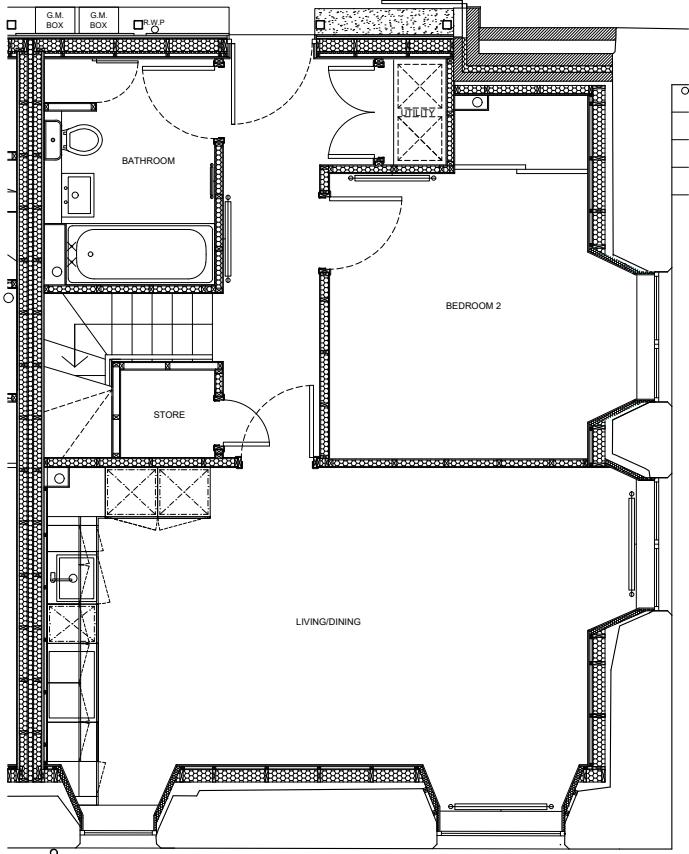
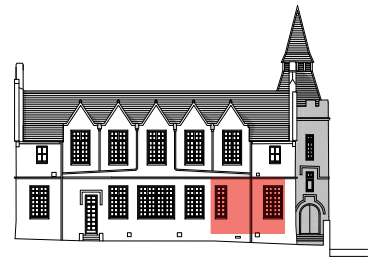
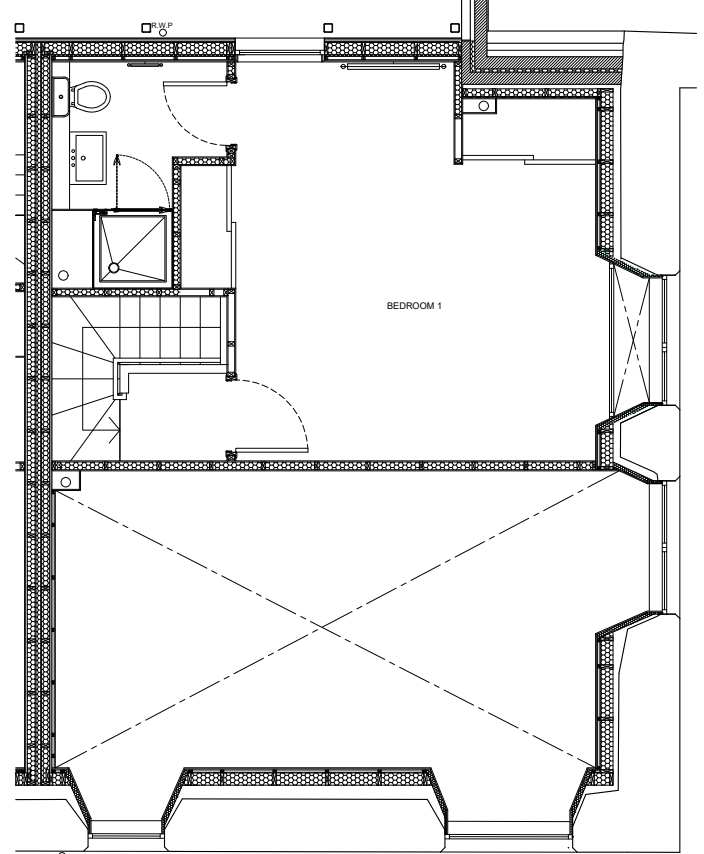


# NEW STEINER



GROUND FLOOR

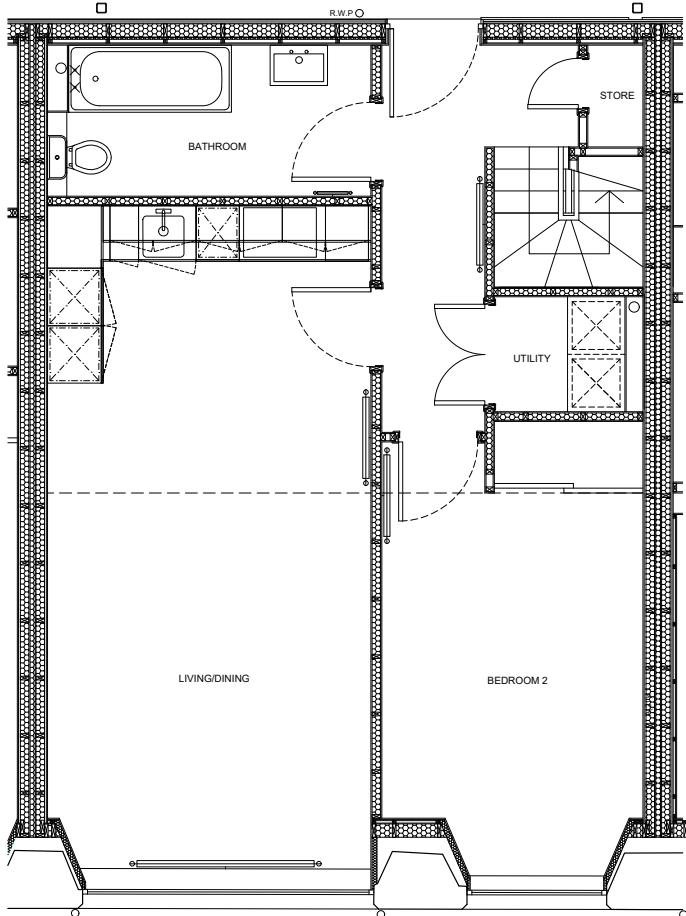


MEZZANINE FLOOR

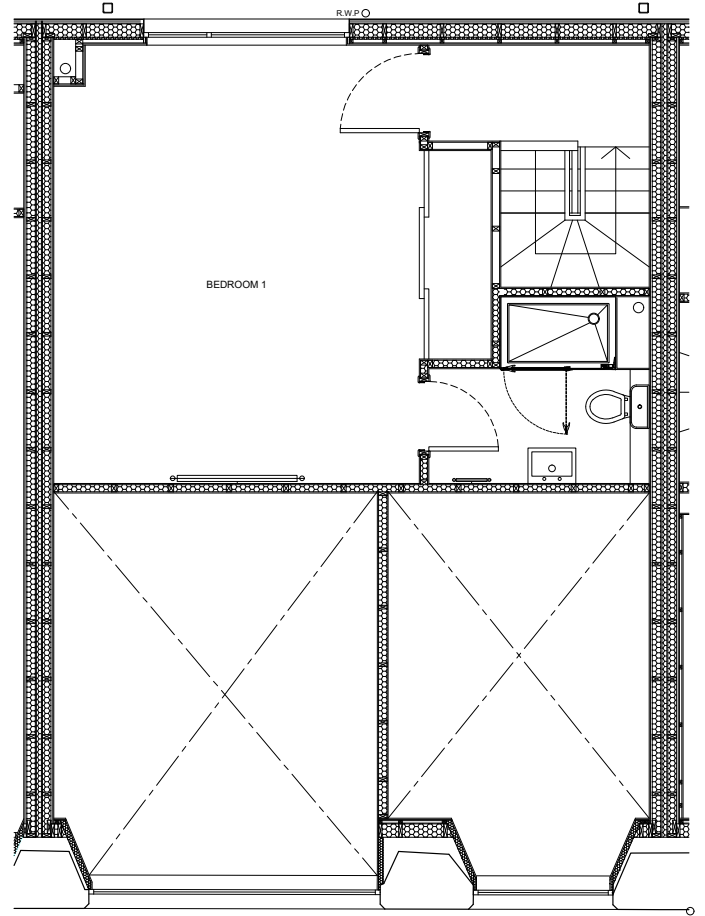
## PLOT 1

KITCHEN/LIVING/DINING	6600 x 3900	21'7" x 12'9"
BATHROOM	2900 x 3200	9'6" x 10'5"
EN-SUITE	2000 x 2500	6'7" x 8'2"
BEDROOM 1	4500 x 4100	14'9" x 13'5"
BEDROOM 2	3100 x 3300	10'2" x 10'9"
UTILITY	720 x 1200	2'4" x 3'11"
STORE	1075 x 1200	3'6" x 3'11"
<b>TOTAL AREA</b>	<b>75.56m<sup>2</sup></b>	<b>813.32ft<sup>2</sup></b>

# NEW STEINER



GROUND FLOOR

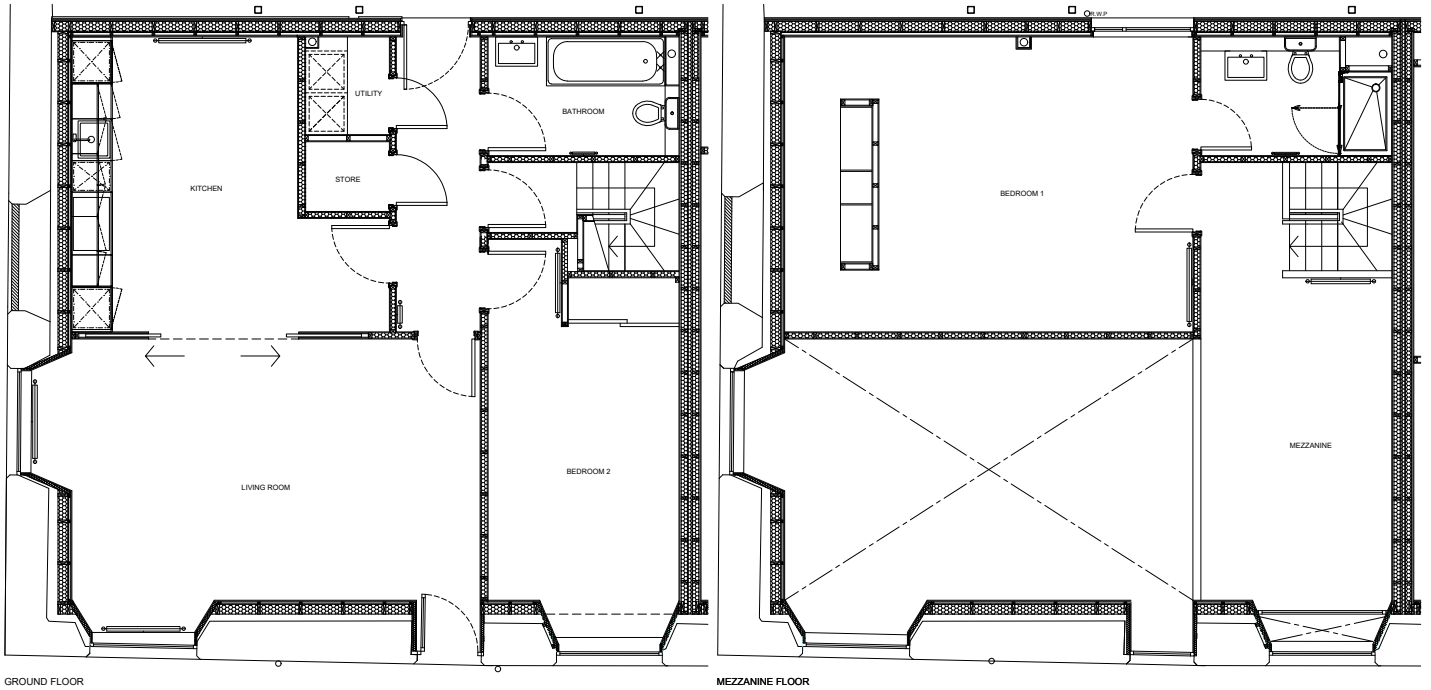


MEZZANINE FLOOR

## PLOT 2

KITCHEN/LIVING/DINING	6935 x 3375	22'9" x 11'1"
BATHROOM	1575 x 3375	5'2" x 11'1"
EN-SUITE	1945 x 3000	6'5" x 9'10"
BEDROOM 1	4575 x 3815	15'0" x 12'6"
BEDROOM 2	3395 x 2725	11'2" x 8'11"
UTILITY	1550 x 1200	5'1" x 3'11"
STORE	575 x 1060	1'11" x 3'4"
<b>TOTAL AREA</b>	<b>78.63m<sup>2</sup></b>	<b>846.37ft<sup>2</sup></b>

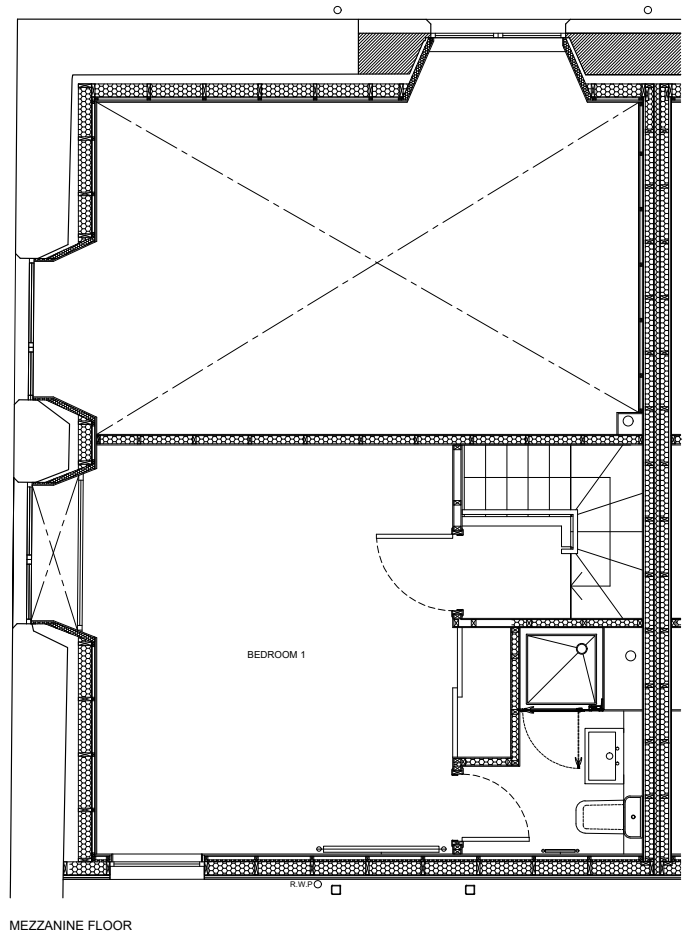
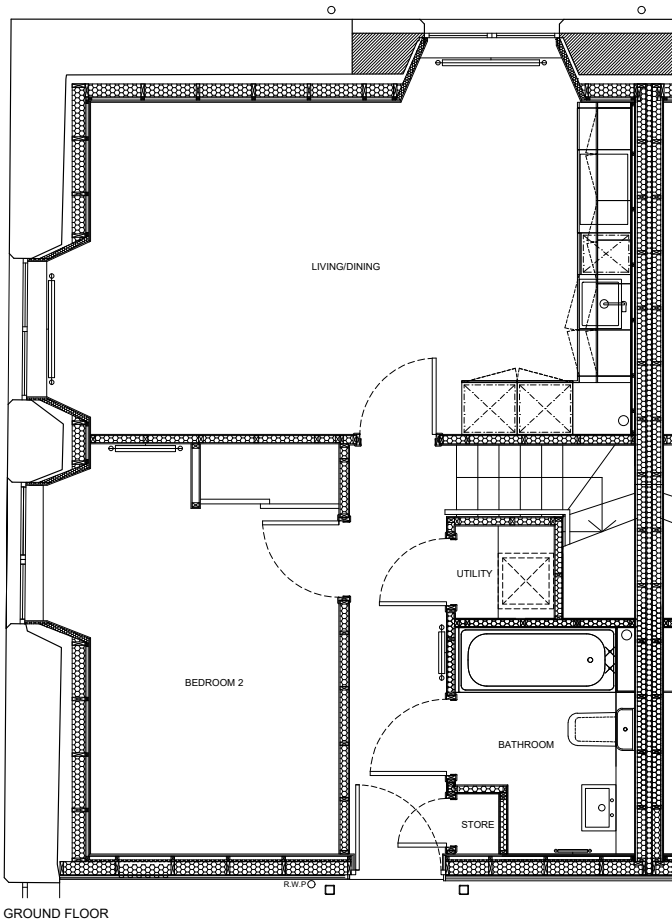
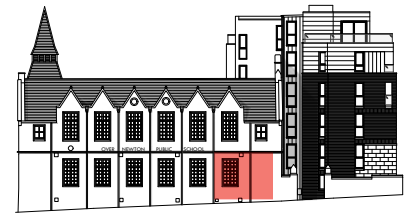
# NEW STEINER



## PLOT 3

LIVING ROOM	5450 x 3745	17'11" x 12'3"
KITCHEN	3235 x 4240	10'7" x 13'11"
BATHROOM	1700 x 2735	5'7" x 12'0"
EN-SUITE	1700 x 2735	5'7" x 12'0"
BEDROOM 1	5850 x 4225	19'2" x 13'10"
BEDROOM 2	2735 x 3925	12'0" x 12'11"
UTILITY	1400 x 1200	4'7" x 3'11"
STORE	1200 x 1000	3'11" x 3'3"
MEZZANINE	6310 x 2472	20'7" x 8'11"
<b>TOTAL AREA</b>	<b>118.8m<sup>2</sup></b>	<b>1278.75ft<sup>2</sup></b>

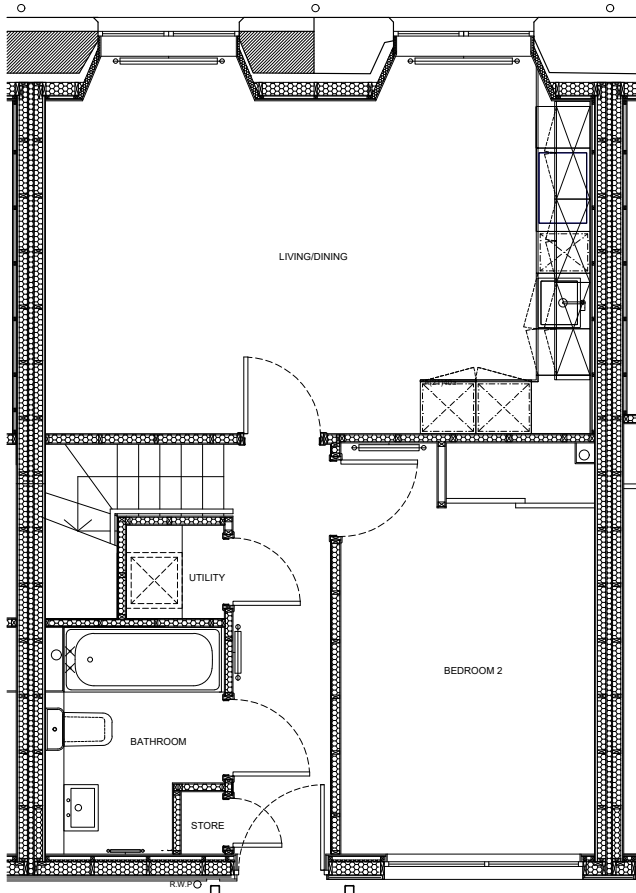
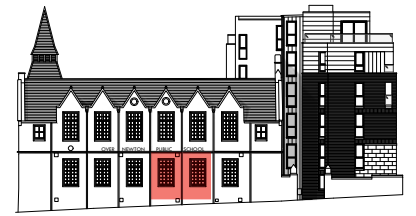
# NEW STEINER



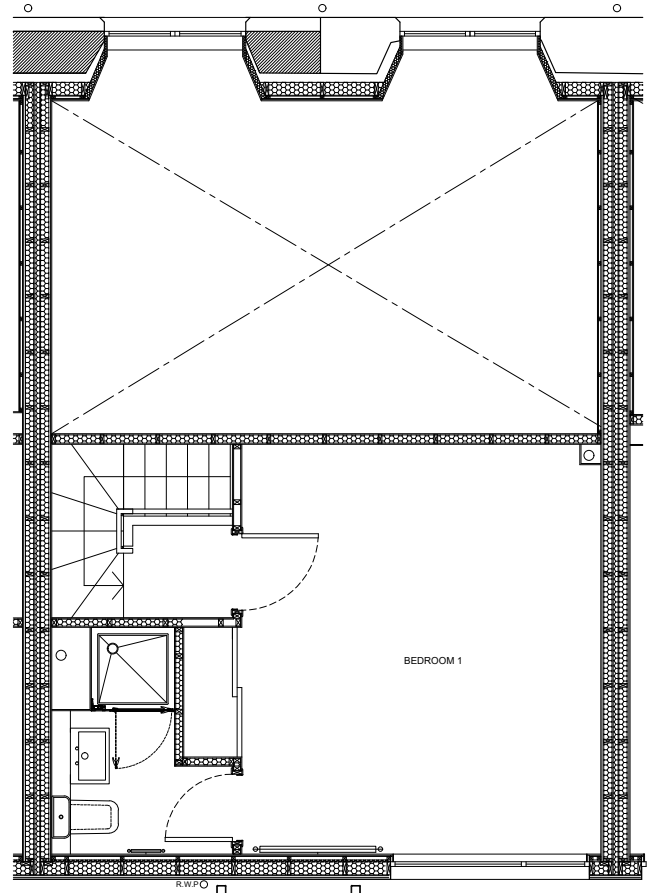
## PLOT 4

KITCHEN/LIVING/DINING	5860 x 3590	19'3" x 11'9"
BATHROOM	1940 x 2250	6'4" x 7'5"
EN-SUITE	1950 x 2450	6'5" x 8'0"
BEDROOM 1	3850 x 4425	12'8" x 14'6"
BEDROOM 2	2685 x 4435	8'10" x 14'7"
UTILITY	1070 x 1000	3'6" x 3'3"
STORE	650 x 475	2'2" x 1'7"
<b>TOTAL AREA</b>	<b>72.64m<sup>2</sup></b>	<b>781.89ft<sup>2</sup></b>

# NEW STEINER



GROUND FLOOR

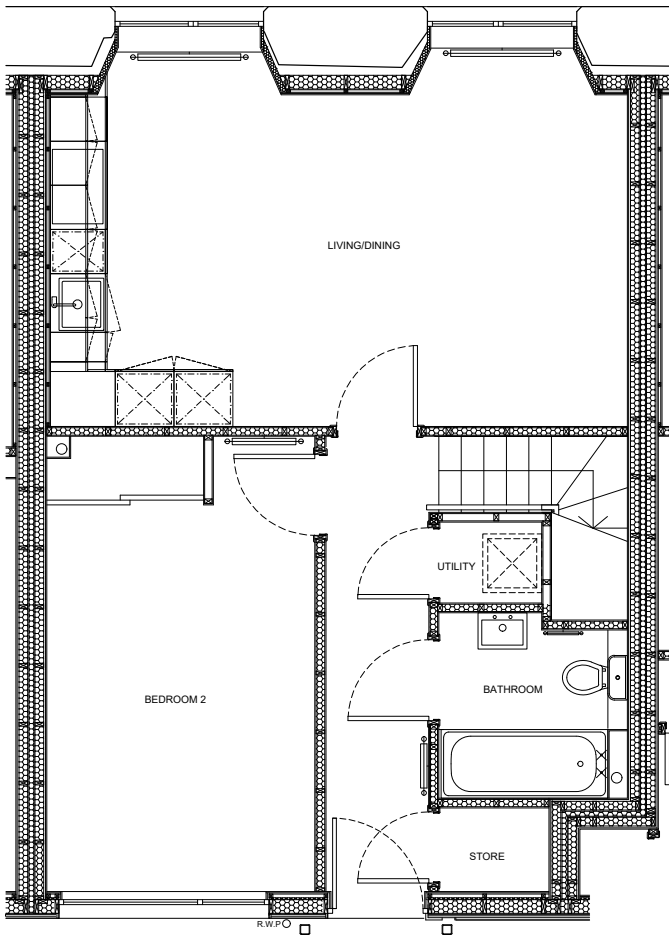
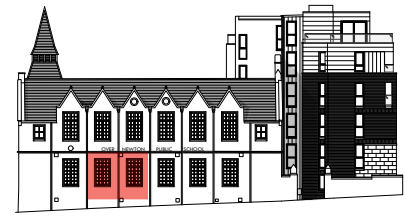


MEZZANINE FLOOR

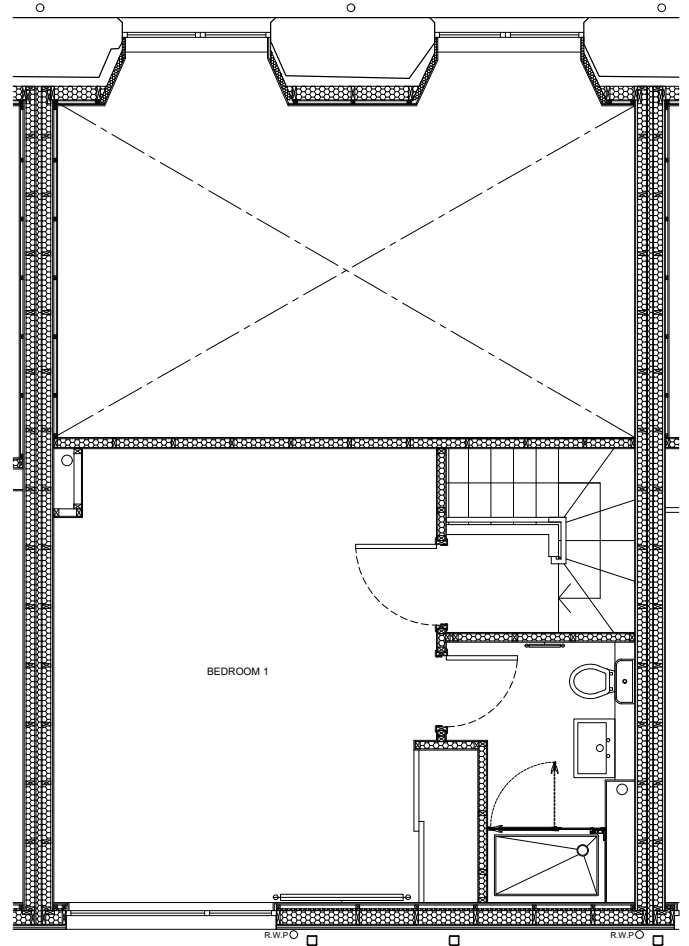
## PLOT 5

KITCHEN/LIVING/DINING	5885 x 3920	19'4" x 12'10"
BATHROOM	1930 x 2250	6'4" x 7'5"
EN-SUITE	1950 x 2450	6'5" x 8'0"
BEDROOM 1	3875 x 4435	12'9" x 14'7"
BEDROOM 2	2735 x 4435	9'0" x 14'7"
UTILITY	1050 x 1005	3'5" x 3'4"
STORE	630 x 465	2'1" x 1'6"
<b>TOTAL AREA</b>	<b>73.34m<sup>2</sup></b>	<b>789.42ft<sup>2</sup></b>

# NEW STEINER



GROUND FLOOR



MEZZANINE FLOOR

## PLOT 6

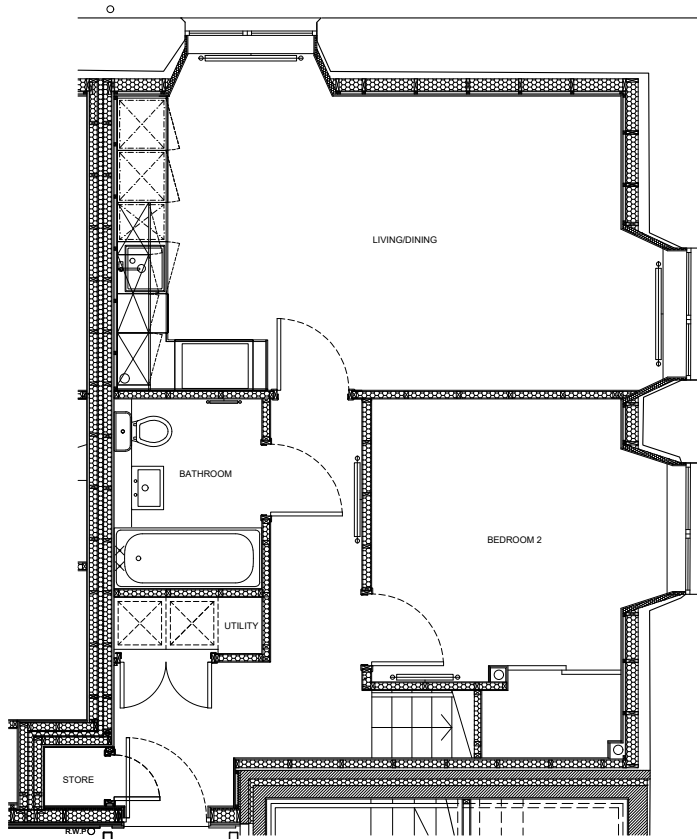
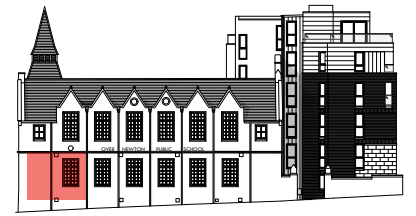
KITCHEN/LIVING/DINING	5885 x 3850	19'4" x 12'8"
BATHROOM	1925 x 1890	6'4" x 6'2"
EN-SUITE	1500 x 2655	4'11" x 8'9"
BEDROOM 1	3905 x 4630	12'10" x 15'2"
BEDROOM 2	2735 x 4645	9'0" x 15'3"
UTILITY	825 x 1045	2'8" x 3'5"
STORE	850 x 1125	2'9" x 3'8"

TOTAL AREA

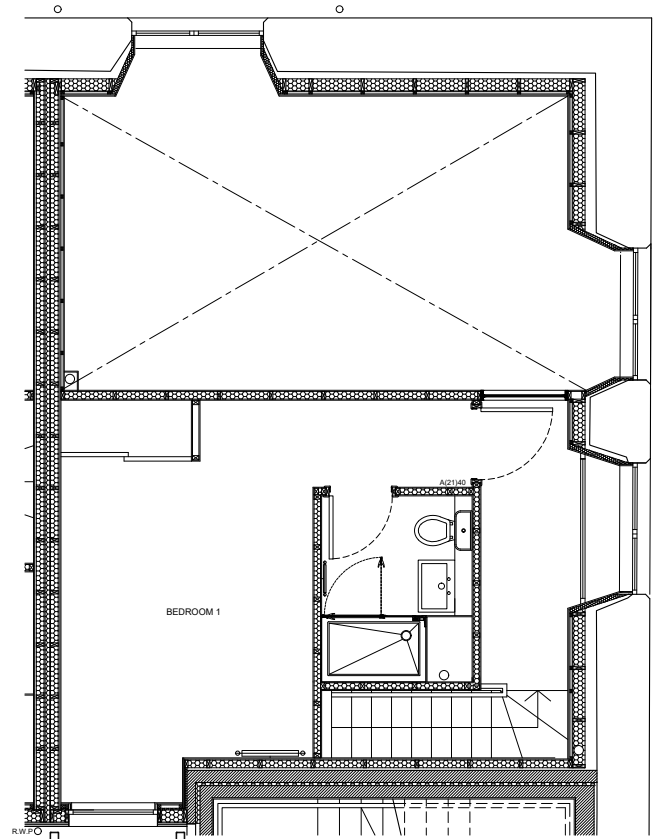
73.75m<sup>2</sup>

793.84ft<sup>2</sup>

# NEW STEINER



GROUND FLOOR

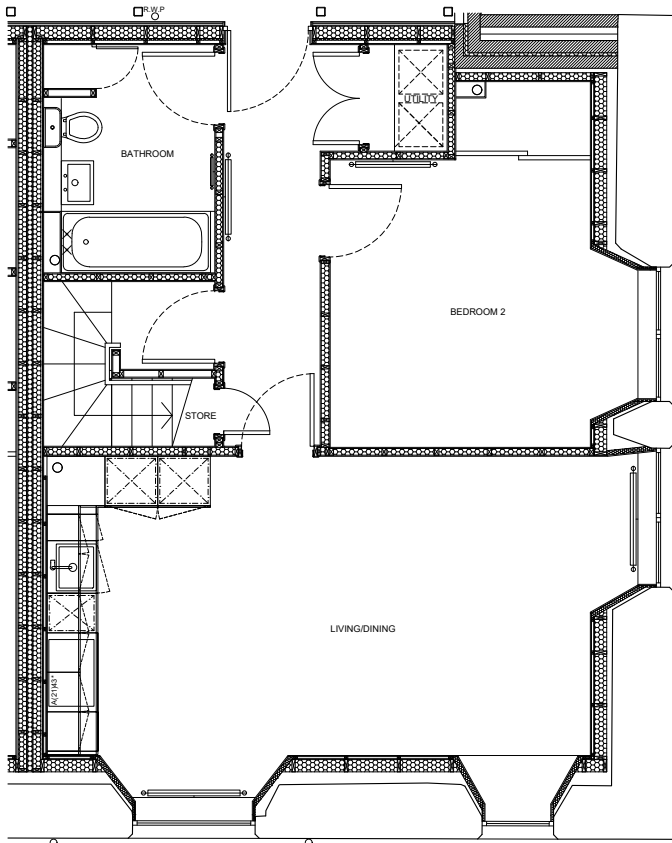


MEZZANINE FLOOR

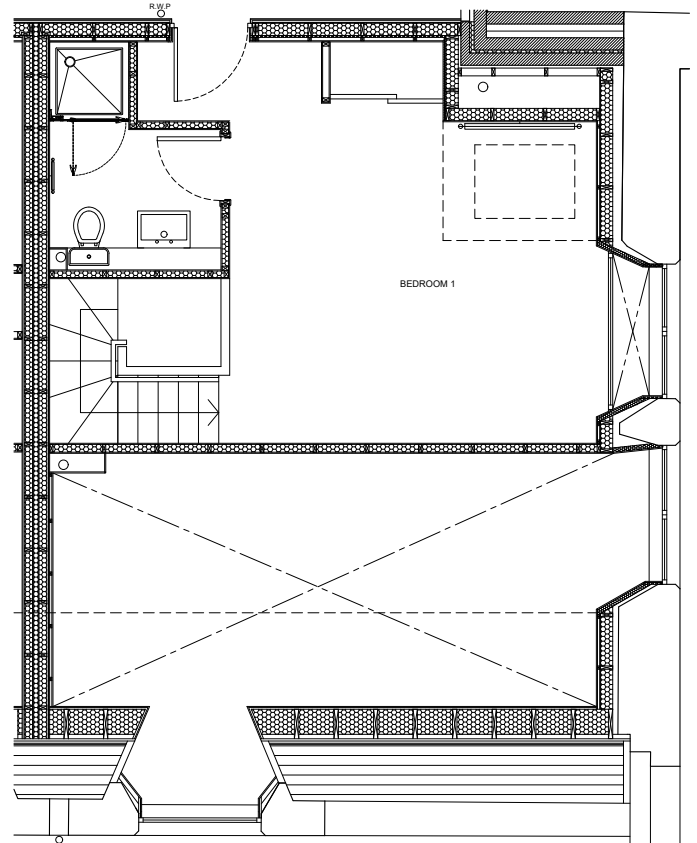
## PLOT 7

KITCHEN/LIVING/DINING	5795 x 3385	19'0" x 11'1"
BATHROOM	1700 x 2185	5'7" x 7'2"
EN-SUITE	1730 x 2140	5'8" x 7'0"
BEDROOM 1	2900 x 4115	9'6" x 13'6"
BEDROOM 2	2865 x 3255	9'5" x 10'8"
UTILITY	645 x 1700	2'1" x 5'7"
STORE	700 x 675	2'4" x 2'3"
<b>TOTAL AREA</b>	<b>70.72m<sup>2</sup></b>	<b>761.22ft<sup>2</sup></b>

# NEW STEINER



FIRST FLOOR



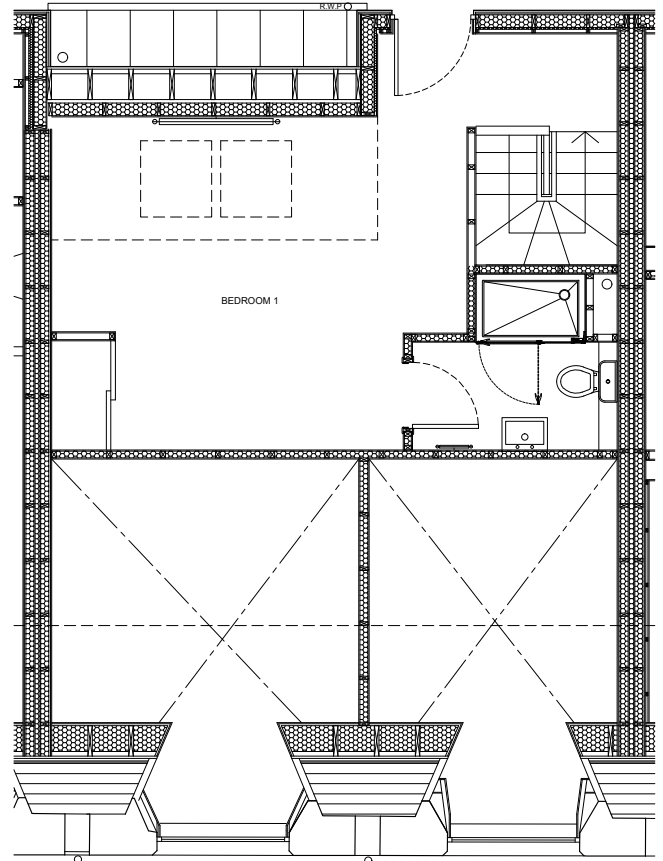
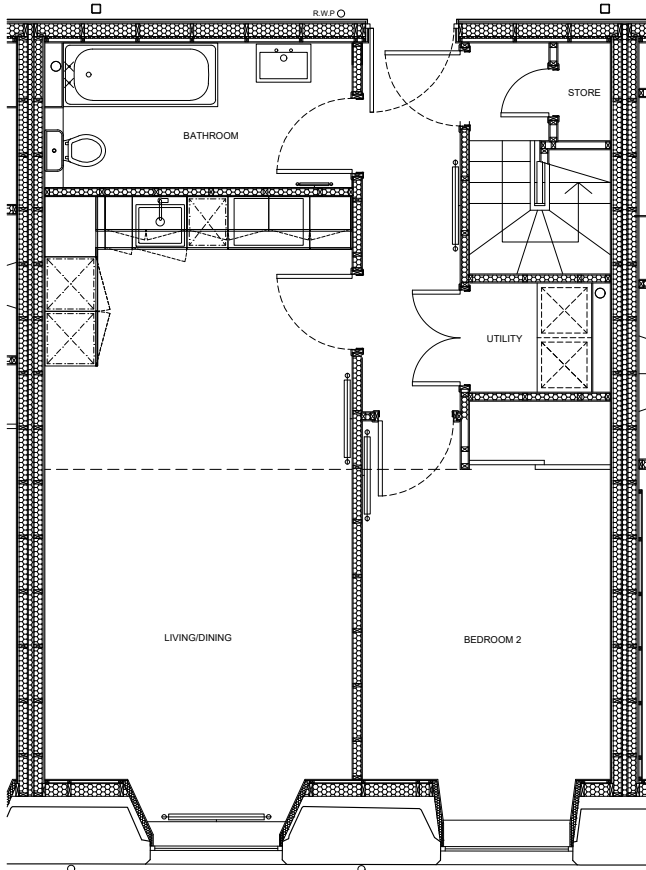
MEZZANINE FLOOR

## PLOT 8

KITCHEN/LIVING/DINING	6190 x 3410	20'4" x 11'2"
BATHROOM	1950 x 2600	6'5" x 8'6"
EN-SUITE	1950 x 2600	6'5" x 8'6"
BEDROOM 1	4175 x 4570	13'8" x 15'0"
BEDROOM 2	2960 x 3275	9'9" x 10'9"
UTILITY	900 x 1210	2'11" x 4'0"
STORE	775 x 1100	6'6" x 3'7"
<b>TOTAL AREA</b>	<b>75.72m<sup>2</sup></b>	<b>815.04ft<sup>2</sup></b>



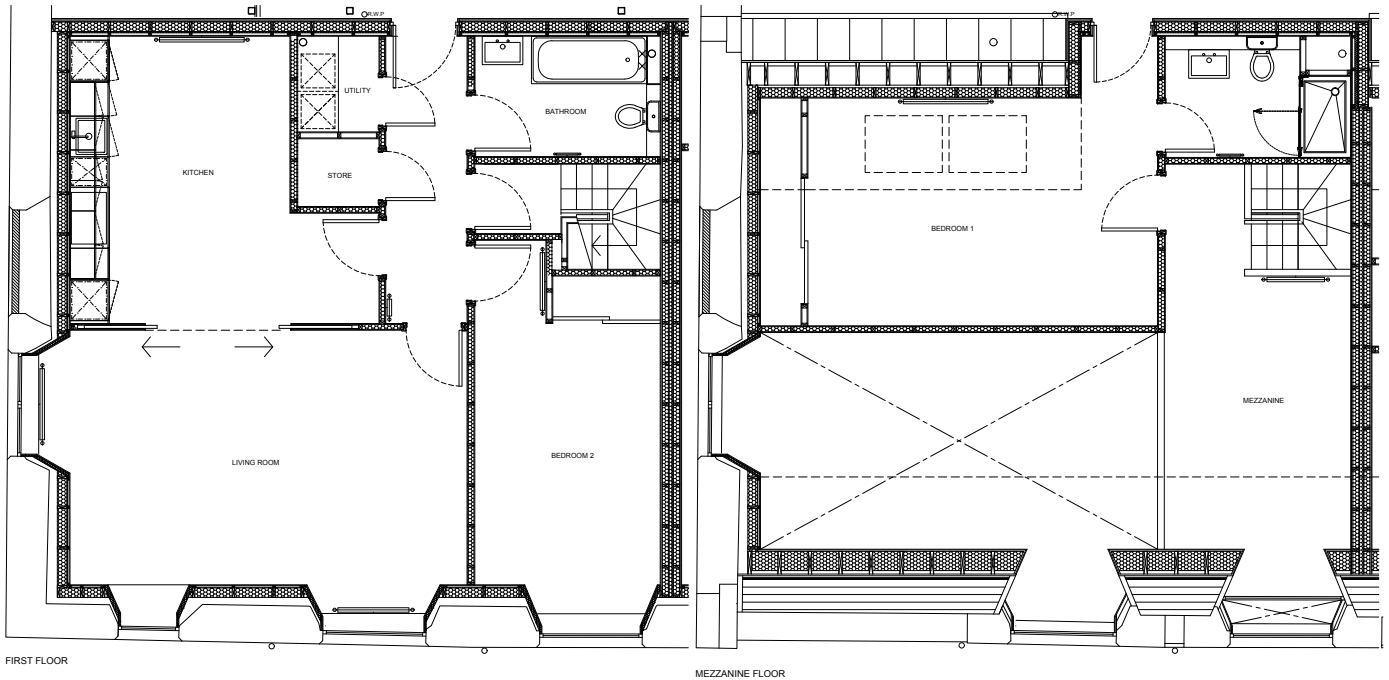
# NEW STEINER



## PLOT 9

KITCHEN/LIVING/DINING	6405 x 3375	21'0" x 11'1"
BATHROOM	1590 x 3375	5'3" x 11'1"
EN-SUITE	1935 x 2250	6'4" x 7'5"
BEDROOM 1	4565 x 3360	15'0" x 11'0"
BEDROOM 2	2725 x 3410	8'11" x 11'2"
UTILITY	1345 x 1200	4'5" x 3'11"
STORE	575 x 1075	1'11" x 3'6"
<b>TOTAL AREA</b>	<b>74.58m<sup>2</sup></b>	<b>802.77ft<sup>2</sup></b>

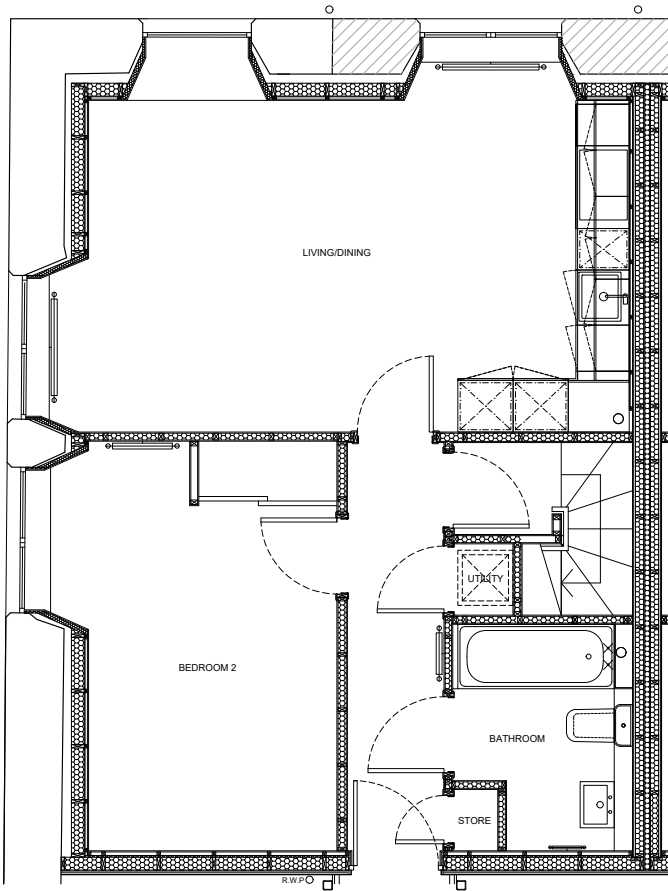
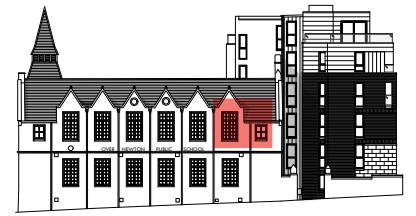
# NEW STEINER



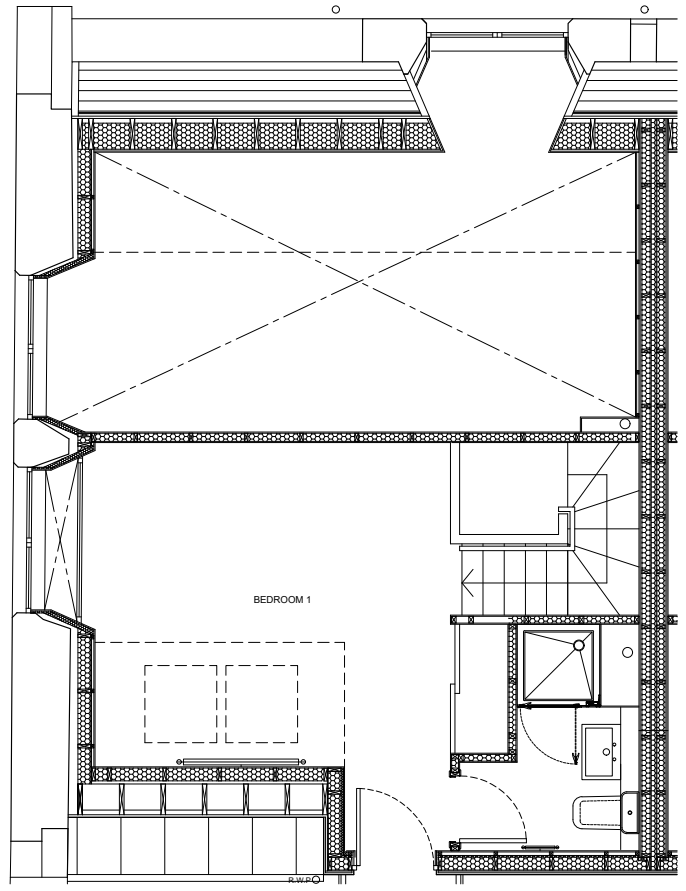
## PLOT 10

KITCHEN	4230 x 3245	13'11" x 10'8"
LIVING	5860 x 3755	19'3" x 12'4"
BATHROOM	1775 x 2735	5'10" x 9'0"
EN-SUITE	1790 x 2735	5'10" x 9'0"
BEDROOM 1	4735 x 3360	15'6" x 11'0"
BEDROOM 2	2735 x 3855	9'0" x 12'8"
UTILITY	1410 x 1200	4'8" x 3'11"
STORE	1000 x 1200	3'3" x 3'11"
MEZZANINE	5822 x 2472	19'1" x 8'11"
TOTAL AREA	112.42m <sup>2</sup>	1210.08ft <sup>2</sup>

# NEW STEINER



FIRST FLOOR

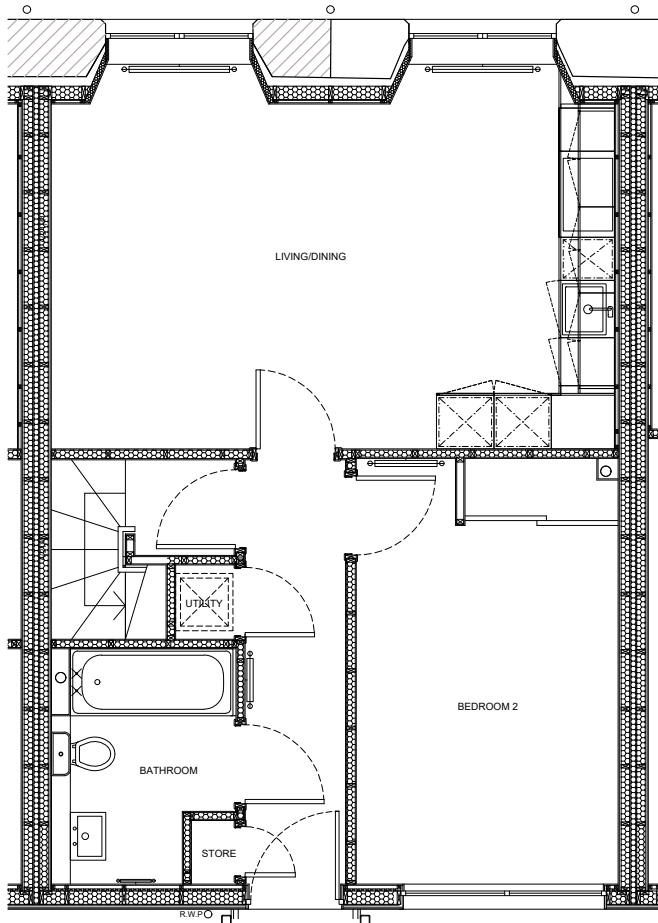
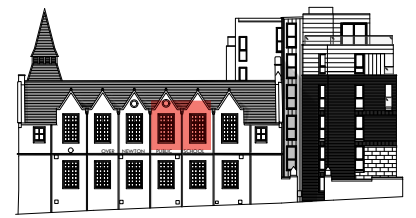


MEZZANINE FLOOR

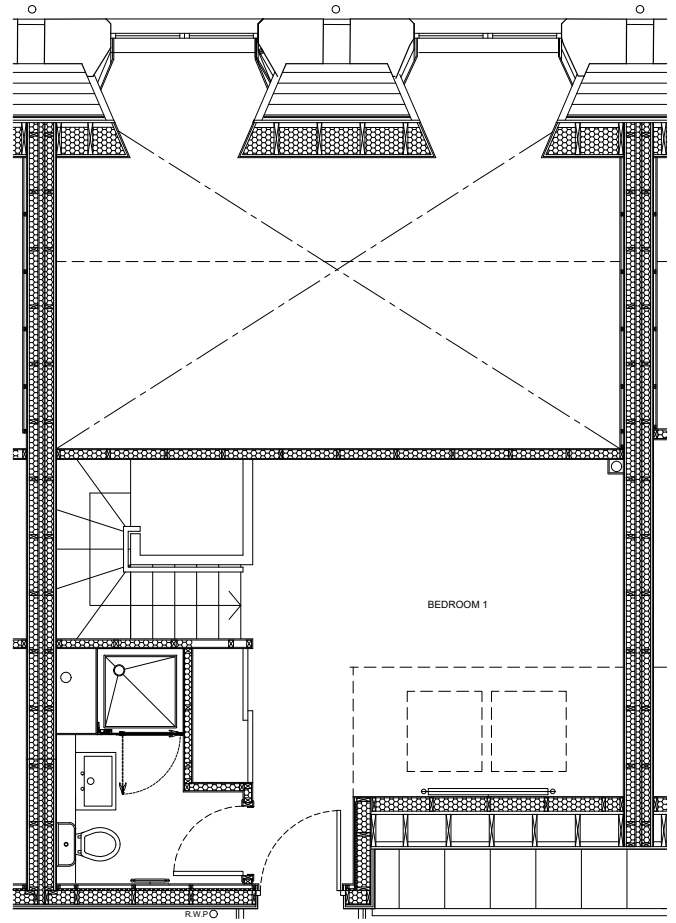
## PLOT 11

KITCHEN/LIVING/DINING	5875 x 3605	19'3" x 11'10"
BATHROOM	1955 x 2460	6'5" x 8'1"
EN-SUITE	1950 x 2540	6'5" x 8'4"
BEDROOM 1	3860 x 3525	12'8" x 11'7"
BEDROOM 2	2695 x 4450	8'10" x 14'7"
UTILITY	650 x 775	2'2" x 6'6"
STORE	665 x 500	2'2" x 1'8"
<b>TOTAL AREA</b>	<b>70.64m<sup>2</sup></b>	<b>760.36ft<sup>2</sup></b>

# NEW STEINER



FIRST FLOOR

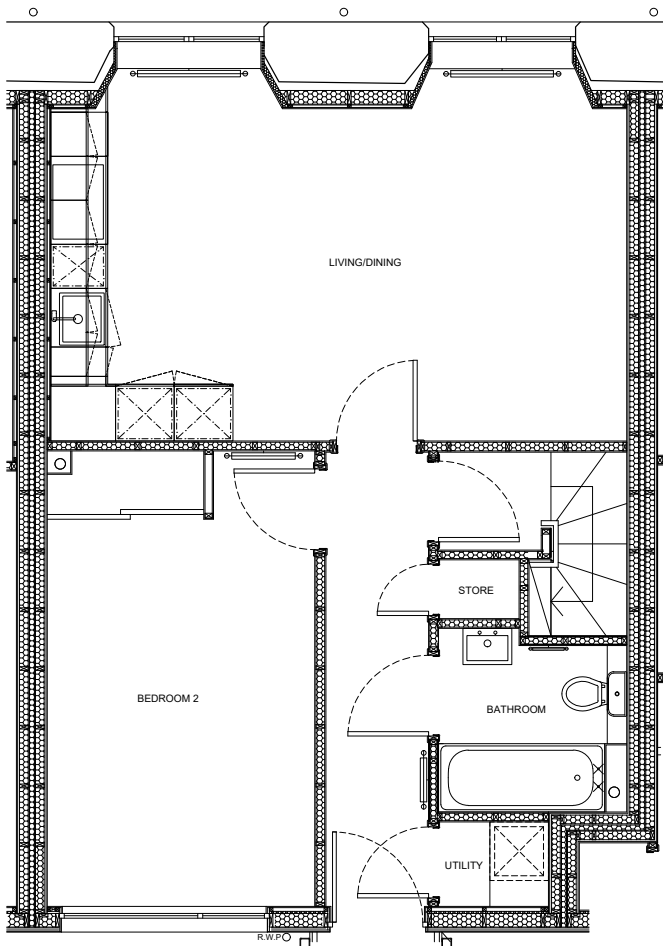
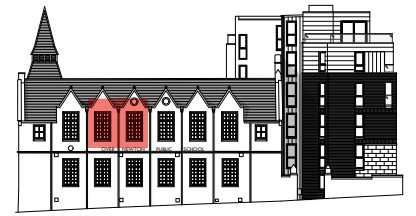


MEZZANINE FLOOR

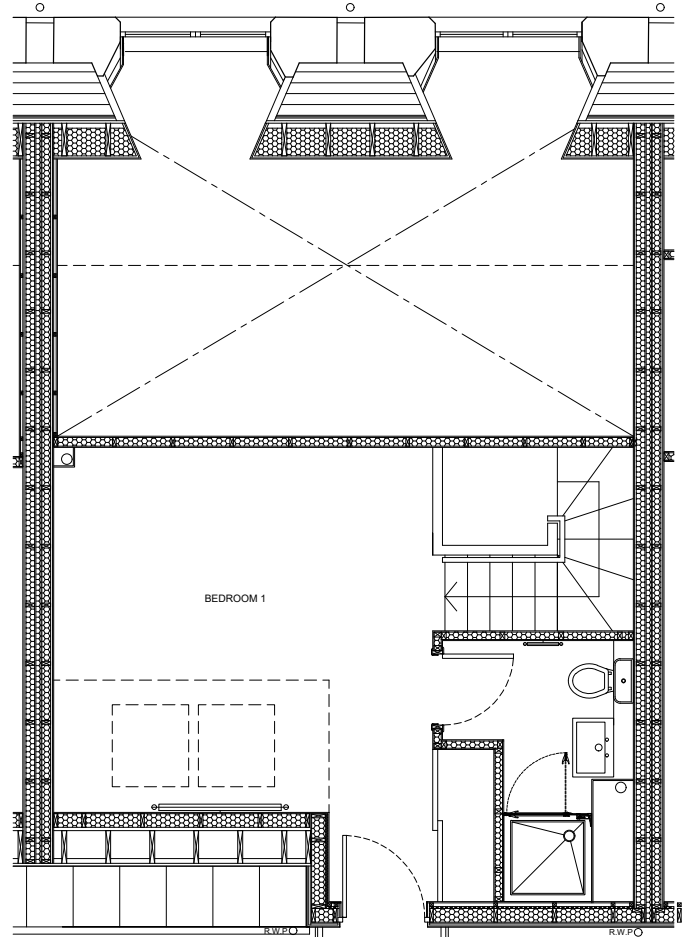
## PLOT 12

KITCHEN/LIVING/DINING	5885 x 3605	19'4" x 11'10"
BATHROOM	1930 x 2460	6'4" x 8'1"
EN-SUITE	1325 x 2450	4'4" x 8'0"
BEDROOM 1	3875 x 3525	12'9" x 11'7"
BEDROOM 2	2735 x 3750	9'0" x 12'4"
UTILITY	625 x 775	2'1" x 2'7"
STORE	665 x 465	2'2" x 1'6"
<b>TOTAL AREA</b>	<b>69.52m<sup>2</sup></b>	<b>748.31ft<sup>2</sup></b>

# NEW STEINER



FIRST FLOOR

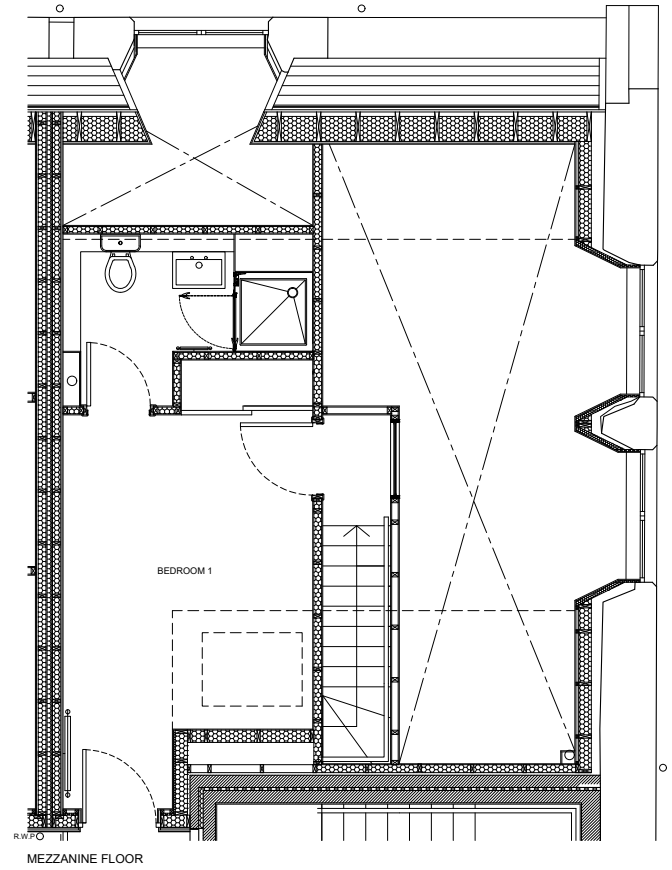
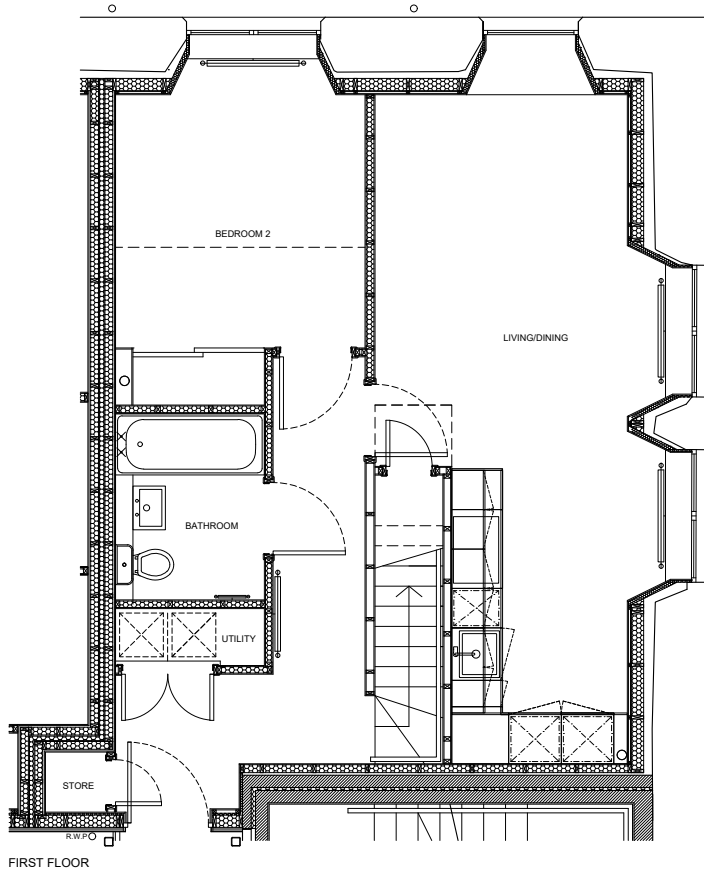
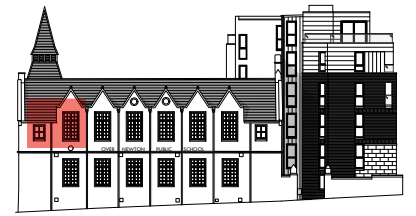


MEZZANINE FLOOR

## PLOT 13

KITCHEN/LIVING/DINING	5885 x 3395	19'4" x 11'2"
BATHROOM	1950 x 1700	6'5" x 5'7"
EN-SUITE	1325 x 2665	4'4" x 8'9"
BEDROOM 1	3730 x 3875	12'3" x 12'9"
BEDROOM 2	2735 x 3955	9'0" x 13'0"
UTILITY	1150 x 850	3'9" x 2'9"
STORE	600 x 825	2'0" x 2'8"
<b>TOTAL AREA</b>	<b>70.08m<sup>2</sup></b>	<b>754.33ft<sup>2</sup></b>

# NEW STEINER



## PLOT 14

KITCHEN/LIVING/DINING	7640 x 2880	25'1" x 9'5"
BATHROOM	2125 x 1700	7'0" x 5'7"
EN-SUITE	1960 x 2850	6'5" x 9'4"
BEDROOM 1	2850 x 3585	9'4" x 11'9"
BEDROOM 2	2890 x 2850	9'6" x 9'4"
UTILITY	1700 x 650	5'7" x 2'2"
STORE	700 x 685	2'4" x 4'3"
<b>TOTAL AREA</b>	<b>66.79m<sup>2</sup></b>	<b>718.92ft<sup>2</sup></b>